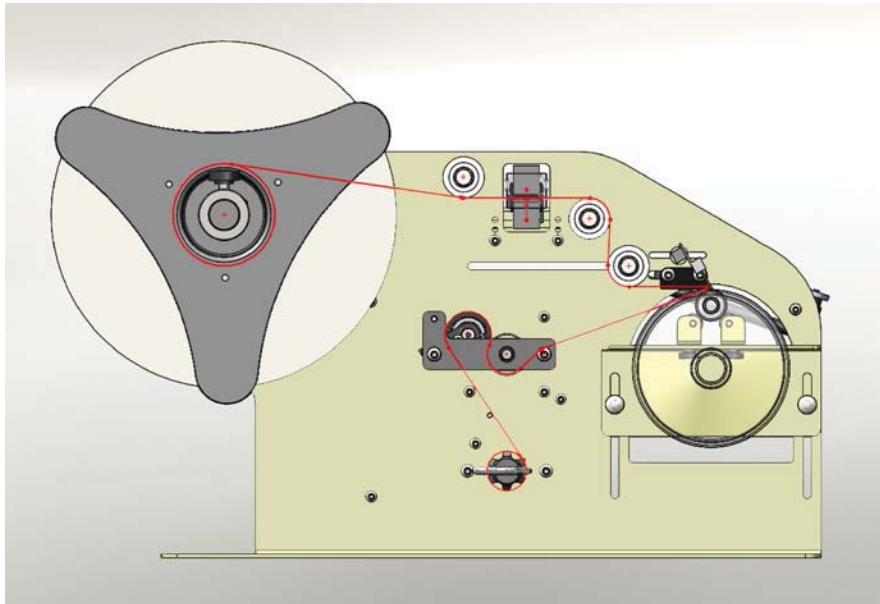




OPERATIONS MANUAL
MODEL TAL-2100ER
ELECTRIC ROUND PRODUCT
LABEL APPLICATOR



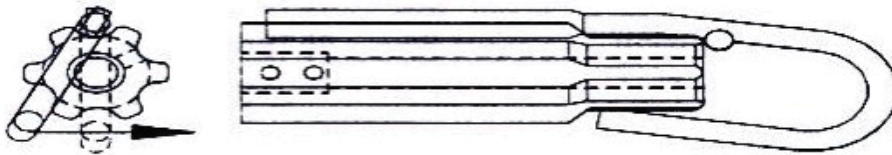
TAKE-A-LABEL®
Distributed by
Pro Pack Solutions, Inc.
2421B Lance Court
Loganville, GA 30052
www.propacksolutions.com
770-554-1187



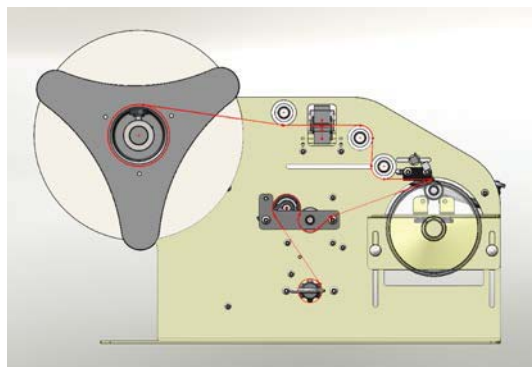
TAL-2100ER Round Product Applicator

Label Threading:

1. Remove outer unwind disc (47) install new roll of labels and replace disc.
2. Pull label web under the first roller (28A), throw the photo eye (23). Continue pulling the label web over the top and then wrapping around the next roller (28B). Pull the web back over the top and around the label stop roller (28C). Then pull the webbing back to the front of the applicator and over the peel edge (1).
3. Rotate application brush (5) up to allow web clearance.
4. Pull web around the peel plate (1).
5. Pull web back and under the drive roller (30), and up between the drive roller (30) and pinch roller (26), then back down to the waist wind shaft (45). Note: The pinch roller (26) is spring loaded. Slight pressure will be needed to separate the pinch roller from the drive roller for threading.
6. Install waist wind clip (46) on waist wind shaft (45) placing the webbing between the shaft and the clip.



7. Cycle the applicator by stepping on the footswitch (24).





Teaching the photo eye:

1. It is recommended that you teach the photo eye (23) with every new roll of labels used.
2. Remove one label from the webbing and place the webbing only in the photo eye.
3. Press and hold the “Normal” button on photo eye for 3 seconds. When the lights finish flashing the photo eye is taught.



Setting label stop:

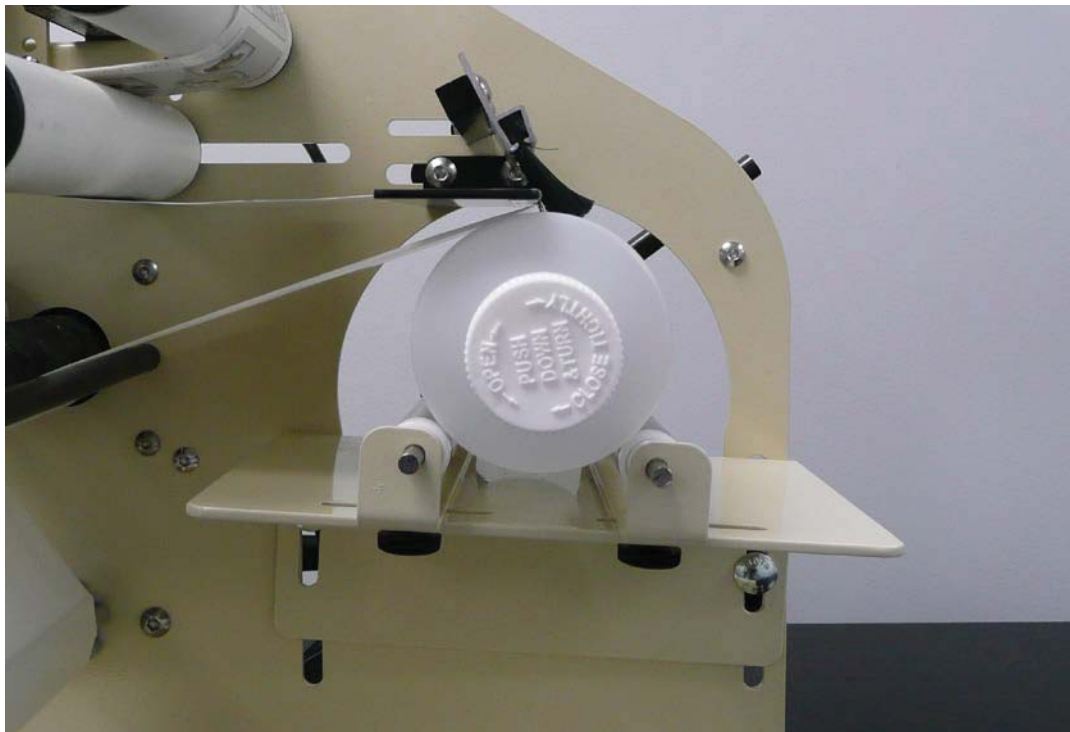
1. For the TAL-2100ER to work properly one label must completely dispense with the next label stopped right at the peel edge (1).
2. Cycle the unit once by stepping on the footswitch (24) to see where the label is stopping.
Note: Rotate application brush (5) up to allow visual inspection if needed.
3. Slide the label stop roller (28C) forward or backward as needed until the label is stopping at the peel edge (1).



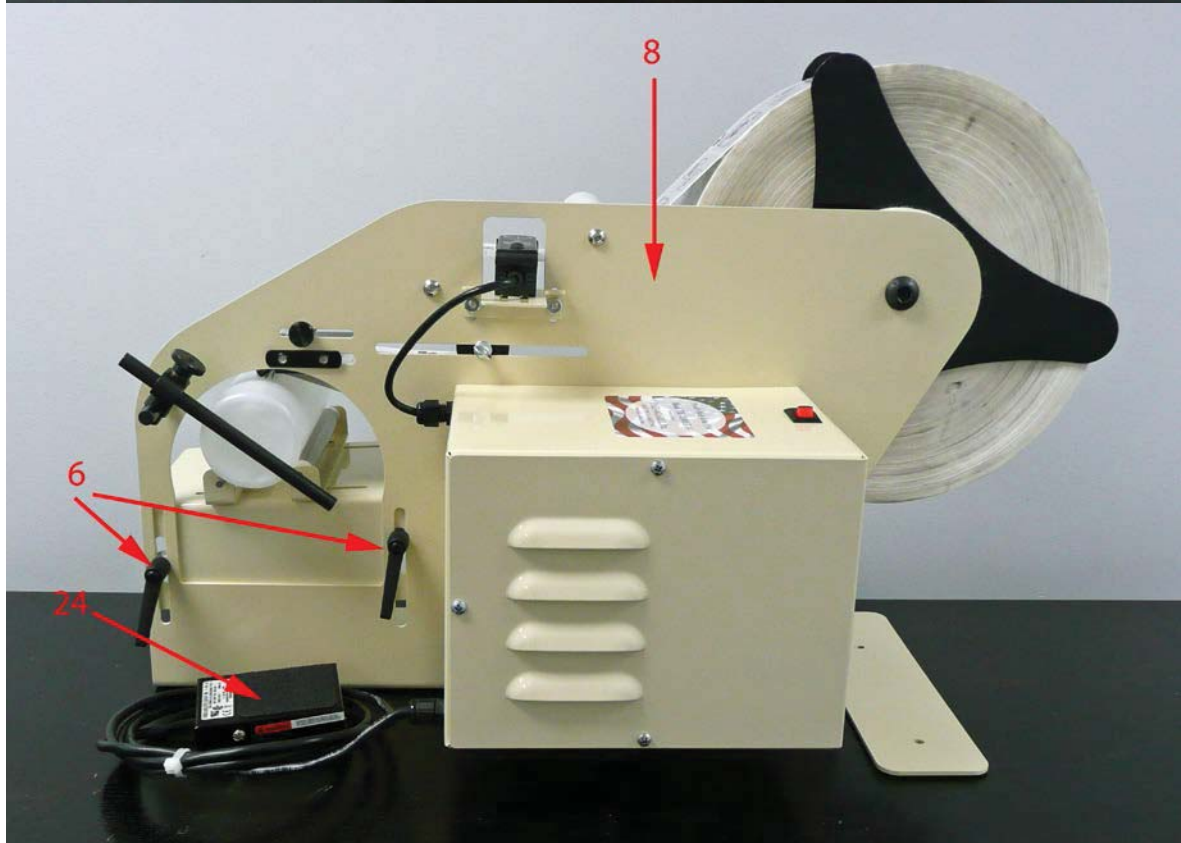
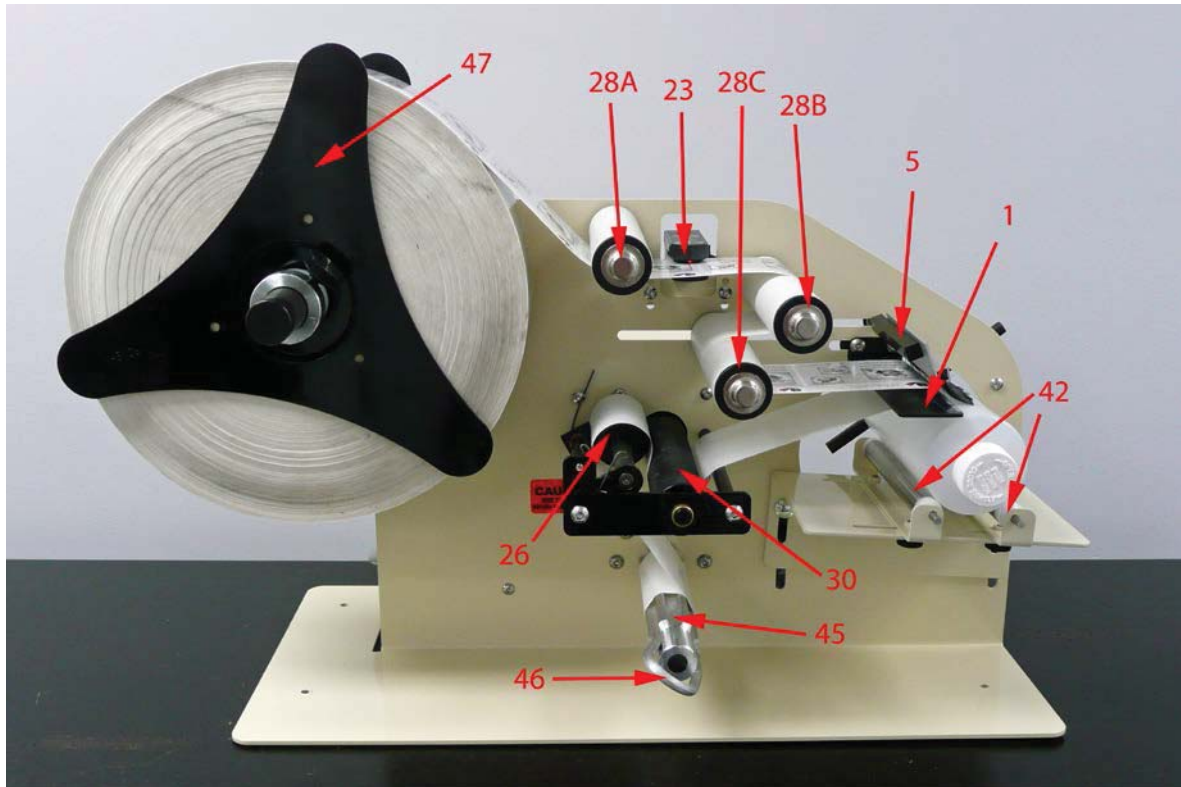


Product Carriage Adjustment:

1. Loosen the thumb screws under the product support rollers (42). Adjust rollers so your product is in the center of the rollers.
2. The product should be setting on the rollers so it will roll easily. Keep the center of the bottle lined up with the peel edge. Do not place the product too deep between the support rollers, or it may not roll smoothly.
3. To raise or lower the product carriage, loosen the two product carriage handles (6) on the main frame (8).
4. Raise the carriage leaving a gap of approximately 1/16” between the bottom of the peel plate and the product.
5. It is often helpful to have a slight tilt to the product carriage, with the front roller lower than the back roller. This will make it easier for the bottle to roll.
6. Rotate application brush (5) down to help stick labels to product.



TAKE A LABEL





TAL-2100ER Parts List

Item #	Description	#
11002	Peel Plate	1
11003	Carriage Support	2
11004	Roller Support Bracket	3
11005	Guide Rod Support Post	4
11006	Wipe Down Support Rod	5
11007	Carriage Ratchet Handle	6
11008	Unwind Shaft	7
21001	Frame	8
21002	Housing	9
21003	Housing Cover	10
21004	Outboard Support Plate	11
21005	Label Sensor Bracket	12
21010	Pinch Roller Shaft	13
21024	Gates Drive Belt	14
21025	Bronze Bushing	15
21026	Motor Spacers	16
21027	Left Torsion Spring	17
21028	Right Torsion Spring	18
25112	Washer	19
25113	Spring	20
26001	Collar	21
26002	Hub Screw	22
30106	Tri-Tronics Photo Eye	23
30110	Footswitch	24
30653	1/2 -13 BHSCS	25
31002	Pinch Roller	26
31003	Outboard Support Shaft	27
31004	Idler Roller	28
31009	Pinch Roller Side Plate	29
31010	Drive Roller	30
31015	Plastic Bearing	31
31017	Bronze Bushing	32
31029	Bronze Bushing	33
31060	Rewind Bracket	34
31282	V Belt Tensioner	35
31366	Extension Rod	36
31370	Guide Clamp	37
31373	V Belt Pulley	38
31380	V Belt Tensioner Roller	39
31506	4" Pivot Rod	40
37004	Brush and Holder	41
37007	Product Rollers	42
38003	Control Board	43



40007	On/Off Switch	44
45129	W/W Shaft	45
45131	Clip	46
45136	Unwind Disc	47
45153	Power Cord Clap	48
45155	Fuse Holder	49
45157	Fuse	50
45217	Power Cord	51
72618	Felt Pad	52
76800	Heavy Duty Motor	53
81912	Small Cord Grip	54